

TECHNICAL DATA

Displacement	4.08 cc	Weight	250 g
Bore x Stroke	17.8x 16.4 mm	Mount size	37.0x 15.0 mm
Rotational speed	2,500~ 9,000 rpm	Muffler	M251

SUITABLE PROPELLERS

	U11CX DIESEL	SS15 DIESEL	SS25 DIESEL
C/L	9x5~6	10x4, 9x6	11x6~7, 12x6
R/C	9x5~6	10x4~5	11x6~7, 12x6

FUEL

ENYA SS25D will operate satisfactorily on most kinds of model diesel fuel of high quality sold on the market. But take care of the following.

a) The best running positions of **compression adjusting screw (C.A.S.)** and needle valve vary according to the kind of fuel.

b) Ethyl ether (one of the chief components) is very volatile. And old fuel (reserved for a long time) sometimes causes troubles of non-starting, unsmooth-running, poor power, etc.

The standard mixing ratio of components is as follows.

COMPONENT	MIXING RATIO
Kerosene	39 ~ 41%
Ethyl ether	34 ~ 36%
Castor oil	25%
Amyl-nitrate(amyl-nitrite)	0 ~ 2%

BREAKING IN

It is recommended to break your ENYA SS25D in carefully with slightly rich mixture during 1/2 or 1 hour on a test stand to obtain maximum power and long life.

CORRECT HANDLING OF THE C.A.S.

It is very important to confirm the correct positions of the C.A.S. and handle it properly to start and run a model diesel engine. The engine may be broken if it is handled improperly. The best position of the C.A.S. of ENYA SS25D for starting and running is usually between 5.0 ~ 5.4 mm from the top of the cylinder head. The C.A.S. of each ENYA SS25D is set in the best position for starting at the factory.

STARTING ENYA SS25 DIESEL

ENYA SS25D will start very easily by proper handling.

1. Close the needle valve, and fill the fuel tank with fuel.
2. Prime the engine by injecting several drops of fuel both in the intake and exhaust port, and the needle valve 2 or 2 1/2 turns.
3. Crank the engine until clockwise quickly by flipping the propeller with your finger. The engine should start by 10 ~ 20 good flicks when the fuel is of good quality, and the quantity of fuel injected and the compression ratio are proper.

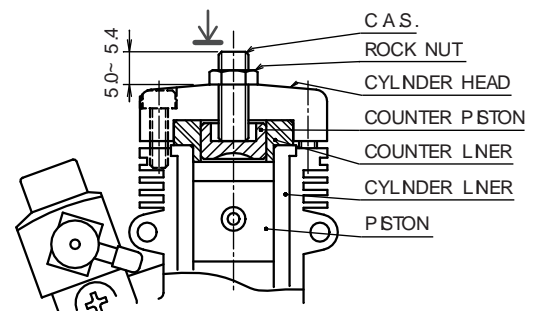
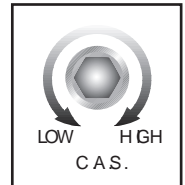
In case the engine neither starts nor knocks in 20 ~ 30 flicks, screw up the C.A.S. 1/8 or 1/4 turns continuing, flipping the propeller.

In case the engine pre-ignition and knocks, slack off the C.A.S. 1/8 ~ 1/4 turns.

If the engine stops after a short running, open the needle valve more 1/4 ~ 1/2 turn, and continue to flip the propeller after priming.

As the overflowed fuel from the carburetor into crankcase makes starting the engine difficult, take care the fuel surface in the tank is not too high.

4. Once your engine starts, adjust the needle valve and the C.A.S. alternately and gradually to the best running position. **DO NOT RAISE THE COMPRESSION SO HIGHLY AS THE ENGINE SLOWS DOWN.** This is very harmful for the engine.
5. In case the C.A.S. of your ENYA SS25D has the tendency of loosening while it is running, use the locking nut enclosed in the box.

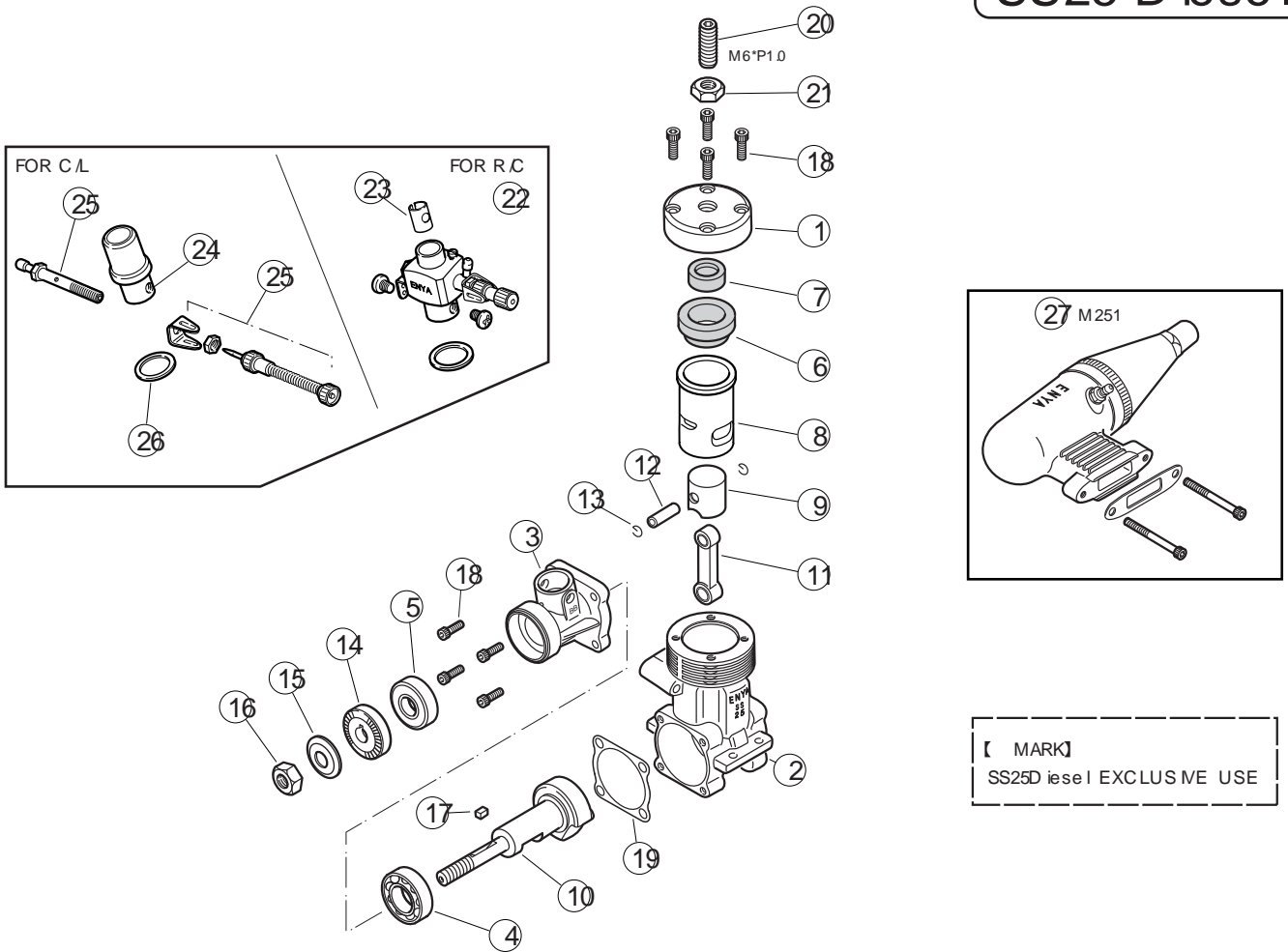


OTHER NOTE

1. Do not disassemble your engine needlessly.
2. If you find some defective parts or workmanship in your new engine, return it to our factory. We will repair it free of charge.

DRAWING DETAIL

SS25 Diesel



PARTS LIST

No.	Name of part	Qty.	Part No.
1	CYLINDER HEAD	1	S15D01
2	CRANK CASE	1	S2503
3~ 5	FRONT HOUSING (with 2BB.)	1set	S25B07
3	FRONT HOUSING	1	S25B07A
4	BALL BEARING A	1	19X03B
5	BALL BEARING B	1	195B07C
6~ 7	COUNTER LNER/P STON ASSY	1set	S25D02
6	COUNTER LNER	1	S25D02A
7	COUNTER P STON	1	S25D02B
8~ 9	CYL LNER/P STON ASSY	1set	S25D04
8	CYLINDER LNER	1	S25D04A
9	P STON	1	S25D04B
10	CRANK SHAFT	1	S25B08
11	CONNECTING ROD	1	S2505
12	P STON PIN	1	S2506
13	P STON PIN STOP RING (2pcs)	1	464C61
14	DRIVE WASHER	1	S25B10

No.	Name of part	Qty.	Part No.
15	PROPELLER WASHER	1	195B12
16	PROPELLER NUT	1	195B14
17	KEY	1	195B18
18	SETTING SCREW SET	1set	S25D15B
	C3*10, 4PCS / C3*12, 4PCS		
19	FRONT HOUSING GASKET	1	S2516
20	COMPRESSOR ADJ. SCREW	1	11CXD17
21	ROCK NUT	1	11CXD18
【FOR R/C】			
22	THROTTLE VALVE ASSY	1set	S25D70
23	VENTURI INSERT	1	11CX70V
【FOR C/L】			
24	VENTURI	1	S2521
25	NEEDLE VALVE ASSY	1	29420
26	VENTURIGASKET	1	294B24
【NORMAL MAFFLER】			
27	MUFFLER	1set	M251

ENYA METAL PRODUCTS CO., LTD. **enya**

16-3 TKUMASAWA-H GASHI M YOSHICHO RUMAGUN SAITAMA 354-0046, JAPAN

TEL049(259)5783 FAX049(259)3075